



# RAYCO

A MORBARK® COMPANY



MADE FOR **MORE** TO KEEP PACE WITH **YOU!**

# C120 FORESTRY MULCHER

## FEATURES AND BENEFITS

- 120-hp Cummins QSF3.8L T4F diesel engine
- Super flow hydrostatic circuit for mulcher head
- Mulcher head with 6-foot cutting width
- High/low flow aux hydraulic circuit for attachments
- Purpose-Built Forestry Mulcher • Hydraulic cab tilt for easy access to critical components
- Rear mounted hydraulic winch
- Elevated cooling system for hydraulics and A/C
- Reversing fans (engine & limbriser)
- 17.7-inch rubber tracks (C120R)
- Steel tracks (C120S)
- High/low travel speed with optional 7mph FAST Track (FAST Track option only available on C120R)
- 3-Bar street pads optional on C120S



[MORBARKDEALERS.COM](http://MORBARKDEALERS.COM)



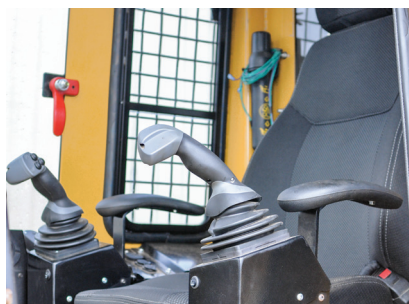
**MORBARK®**



# C120 FORESTRY MULCHER SPECIFICATIONS

GENERAL	120RA US (METRIC)	120SA US (METRIC)
Weight of Carrier with Mulcher	16,725 lb (7,586 kg)	17,730 lb (8,042 kg)
Length of Carrier with Mulcher	204.4" (520cm)	
Height	103" (261.6 cm)	
Width	83.6" (212.4 cm)	83.9" (212.4 cm)
Engine	120-hp Cummins QSF 3.8L, T4F	
Fuel Type	Diesel	
Fuel Capacity (tank)	45 gallons (170.3 L)	
Hydraulic Tank	14 gallons (53 L)	
Rubber Track Width	17.7" (450mm)	
Steel Track Width	19.68" (500mm) single grouser	
Super Flow Hydrostatic Cutter Head Circuit	57 gpm (196.8 L/min)@ 5,800 psi	57 gpm (196.8 L/min)@ 5,800 psi
Attachment Flow High	40 gpm (151.4 L/min)@ 3,770 psi	
Attachment Flow Low	20 gpm (75.7 L/min)@ 3,770 psi	
Travel Speed High	4.7 mph (7.6 km/h)	
Travel Speed Low	2.6 mph (4.2 km/h)	
Fast Track (optional)	7 mph (11.3 km/h)	N/A
Cab Certifications	ROPS ISO 8082 • FOPS ISO 8083 • OPS ISO 8084	

Mulcher Head Model	Predator Mulching Head	Denis Cimaf Mulching Head
Weight	3,465 lb (1,571.7 kg)	3,075 lb (1,395 kg)
Overall Width	83" (211 cm)	87" (219 cm)
Rotor Diameter	16.75" (42.55 cm)	18" (46 cm)
Rotor Speed	2200 RPM	2500 RPM
Cutting Width	71.5" (182 cm)	74" (189 cm)
Max Mowing Height	89" (226.1 cm)	
Cutter Teeth	36 Carbide Tipped Reversible	27 Sharpenable Planar



Large, comfortable cabin with side entry.



Hydraulic rear winch with 12,000-pound capacity.



Purpose-Built Forestry Mulcher